

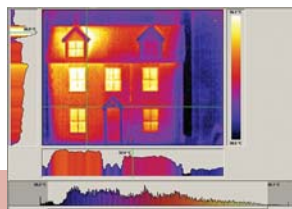
# Temperature Meters

## PCE-TC 3

Thermal imaging camera with high optical resolution (160 x 120 pixels) / good relation between price and quality

The core element of the thermal imaging camera is an Uncooled Focal Plane Array with a resolution of 160 x 120 pixels. This thermal imaging camera has been ergonomically designed making it easy to use with one hand. Thanks to it weighing only 750 g, it's ideal for the analysis of machines and installations, for construction among many other applications. The PCE-TC 3 thermal imaging camera offers a maximum accuracy of  $\pm 2\text{ }^{\circ}\text{C}$  or  $\pm 2\%$  in a temperature range of  $-10\text{ }^{\circ}\text{C}$  up to  $250\text{ }^{\circ}\text{C}$ . On the colour display, both cursors can be moved, while on the job, to different points and the corresponding temperature read directly and determine the difference in temperature between both points. With these high range functions, the user can immediately identify irregularities and take pertinent measurements instantaneously. The integrated laser point also allows the user to precisely locate the measurement area while capturing an image or taking a measurement. Images can be stored to an SD memory card and transferred to a computer later. Across the USB port, data can be transferred in real time; in this case the user can select up to 10 measurement points. Included with the thermal imaging camera are an SD memory card reader and software to allow further detailed analysis of data and thermal images, as well as accompanying descriptions.

- Resolution 160 x 120 pixels
- Temperature range:  $-10$  to  $250\text{ }^{\circ}\text{C}$
- Accuracy: maximum  $\pm 2\text{ }^{\circ}\text{C}$  or  $\pm 2\%$  of compensation of optimum temperature
- Automatic detection of hottest and coldest point in an image
- Ergonomic: use with only one hand, weighs 750 g, ideal for portable use
- Free licence: frequency below 9 Hz
- Laser pointer: Allows for exactly locating measurement point
- SD memory card to store 1000 images
- Software for data transmission and analysis is included

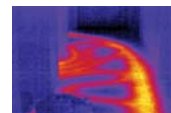
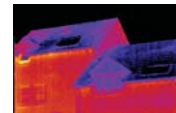
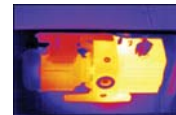


large 3.5" colour display

Software, SD memory card, rechargeable battery, charger, USB cable, card reader, strap and holster included

### Technical specifications

Temperature range	$-10$ to $+250\text{ }^{\circ}\text{C}$
Resolution	0.15 $^{\circ}\text{C}$
Accuracy	$\pm 2\%$ of reading or $\pm 2\text{ }^{\circ}\text{C}$
Points of measurement	160 x 120 (19.200 points)
Sensor	Uncooled Focal Plane Array (UFPA)
Lens (FOV)	$20^{\circ}$ x $15^{\circ}$
Measurement distance	300 mm to infinity
Spectral range	8 to 14 $\mu\text{m}$
Emissivity	0.20 to 1.00 (adjustable)
Memory	approx. 1000 images with an SD card
Interface	USB
Display	3.5" colour
Temperature units	$^{\circ}\text{C}$ , $^{\circ}\text{F}$ or K
Shades	4 variations
Cursor	2 manually moveable cursors
Laser pointer	class II
Power	litium rechargeable
Operating time (with battery)	approx. 4 hours
Enclosure	plastic
Operating temperature	$-15$ to $+45\text{ }^{\circ}\text{C}$
Ingress protection	IP 54
Dimensions	230 x 120 x 110 mm
Weight	750 g



### Contents

PCE-TC 3 thermal imaging camera, rechargeable battery, charger, USB cable, software, SD memory card, card reader, strap, holster, carrying case and user's manual

Model No.	Description
PCE-TC 3	Thermal imaging camera

### Optional Accessories

PCE-TC LG	Battery charger (bench type)
PCE-TC ALG	Charger for automobiles
PCE-TC LS	Light protector for optics
PCE-TC BP	Replacement battery
STAT	Tripod
CAL-PCE-TC	Calibration certificate (with first order)
CAL-PCE-TC R	Calibration certificate (recalibration)



Battery charger (bench type)



Charger for automobiles



Tripod

# Temperature Meters

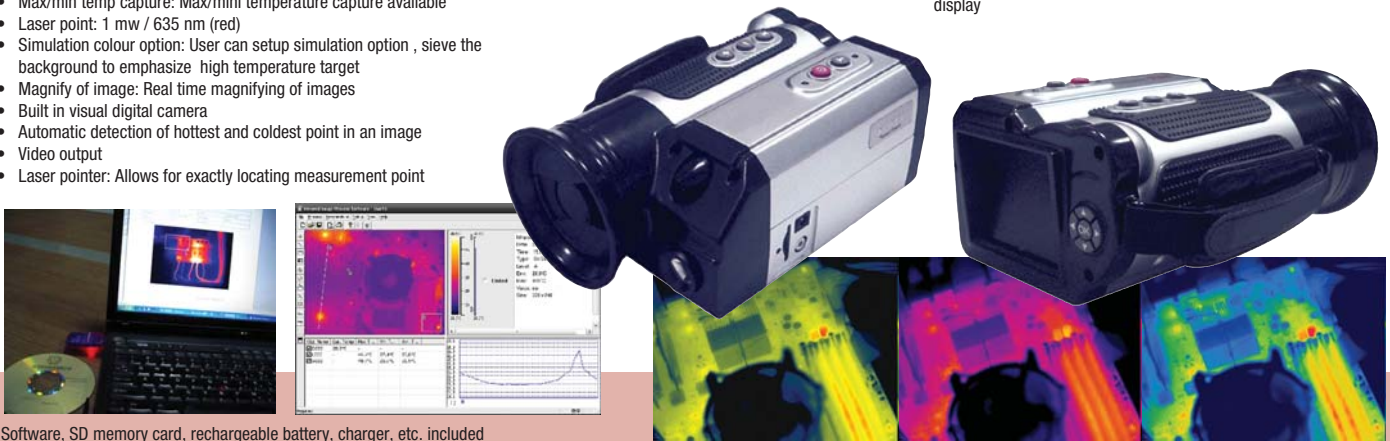
## PCE-TC 8

Thermal imaging camera with high optical resolution (320 x 240 pixels)

PCE-TC 8 portable thermal camera can be used to carry out preventive maintenance, diagnose and validate of equipment failure etc. The circuit of this products has been designed as total digital chip, it has characteristics such as fast response, low power loss, clear image and so on. PCE-TC 8 has both outstanding function and easy operation, it widely applies in industrial detection, electric power and electron, petrochemicals, building inspection, scientific research and many other fields. The core element of the thermal imaging camera is an Uncooled Focal Plane Array with a resolution of 320 x 240 pixels. This thermal imaging camera has been ergonomically designed making it easy to use with one hand. Thanks to it weighing only 1200 g, it's ideal for the analysis of machines and installations, for construction among many other applications. The PCE-TC 8 thermal imaging camera offers a maximum accuracy of  $\pm 2\%$  or  $\pm 1\%$  °C in a temperature range of -20 °C up to +250 °C. On the colour display, 4 cursors can be moved, while on the job, to different points and the corresponding temperature read directly and determine the difference in temperature between 4 points. With these high range functions, the user can immediately identify irregularities and take pertinent measurements instantaneously. The integrated red laser point (1 mw /653 nm) also allows the user to precisely locate the measurement area while capturing an image or taking a measurement.

- High resolution 320 x 240 pixels
- Wide temperature range: -20 to +250 °C
- High accuracy:  $\pm 2\%$  of reading or  $\pm 1\%$  °C
- Operation: Drop-down menu
- Adjustment: Auto adjust brightness/contrast, Auto/manual mix colours
- Dot temperature: Decussation dot temperature display, and sustain 10 dots contemporary most
- Max/min temp capture: Max/mini temperature capture available
- Laser point: 1 mw / 635 nm (red)
- Simulation colour option: User can setup simulation option , sieve the background to emphasize high temperature target
- Magnify of image: Real time magnifying of images
- Built in visual digital camera
- Automatic detection of hottest and coldest point in an image
- Video output
- Laser pointer: Allows for exactly locating measurement point

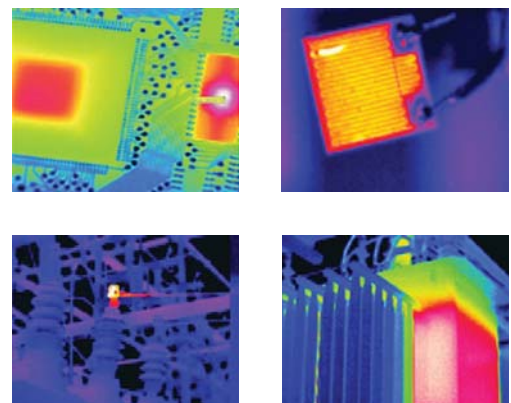
large 3.5" colour display



Software, SD memory card, rechargeable battery, charger, etc. included

### Technical specifications

Temperature range	-20 to +250 °C
Resolution	0.1 °C
Accuracy	$\pm 2\%$ of reading or $\pm 1\%$ °C
Points of measurement	320 x 240 (76.800 points)
Sensor	Uncooled Focal Plane Array (UFPA)
Lens (FOV)	20.6° x 15.5°
Measurement distance	500 mm to infinity
Spectral range	8 to 14 $\mu$ m
Emissivity	0.20 to 1.00 (adjustable)
Frame rate	50 frames / s (PAL)
Response time	4 ms
Memory	1 GB SD card
Interfaces	USB / Video out
Display	high resolution 3.5" colour
Temperature units	°C, °F or K
Shades	5 variations
Cursor	4 manually moveable cursors
Laser pointer	class II
Power	7.2 V lithium battery, rechargeable
Operating time (with battery)	approx. 3 hours
Enclosure	plastic
Operating conditions	-20 to +50 °C / <95 % r.h.
Ingress protection	IP 54
Dimensions	200 x 135 x 95 mm
Weight	1200 g



### Contents

PCE-TC 8 thermal imaging camera, rechargeable battery, charger, lens hood, software, 1 GB SD memory card, Video line, carrying case and user's manual

Model No.	Description
PCE-TC 8	Thermal imaging camera

## Examples for partners of calibration services

**GASCAL** *calibración de analizadores de gas S.L.*



<b>assicontrol</b>		
Tel. 0332 220185 Fax 0332 822553		
Strumento		
Matricola	Operatore	N° Cert.
Data.	SCADENZA	



**Kalibrierdienst  
Stenger**



**Servincal**  
Laboratorio de Metrología y Calibración



Certificado n°  
E 202297

