



Tursdale Technical Services Ltd
Unit N12B
Tursdale Business Park
Co. Durham
DH6 5PG
United Kingdom
Phone: +44 (0) 191 377 3398
Fax: +44 (0) 191 377 3357
info@tursdaletechnicalservices.co.uk
<http://www.industrial-needs.com/>

MANUAL PCE-ME 100





Package Contents.....	3
System Requirements	3
Driver installation	3
Install The application software	3
Using webcam companion2.....	3
SPECIFICATIONS.....	6

Package Contents

When first opening the packing box, note carefully the following parts:

·PCE-ME 100 Digital Cam ·Driver CD ·Adaptor ring ·Installation Instruction ·USB2.0 Cable

System Requirements

- **Windows 98/2000/XP/VISTA**
- Pentium III 800 MHz or equivalent
- 100 MB free hard drive space for program installation
- 256 MB RAM (512 MB DDR RAM recommended)
- 16-bit color display at 800x600 (32 MB video memory with DirectX 3D support recommended)
- DirectX 8.1 or higher

Driver installation

1. Do not plug the USB cable into your PC at this time close any programs that are running.
2. Place the CD in the CD-ROM .
3. Please select the" install PCE-ME 100 driver" to install the camera's Driver.
4. The install wizard appears. Please wait.
5. Select the language and click the "**NEXT**" to continue until finishing the installation.
6. Connect the camera to your PC, the PC will find new USB device. Please click "NEXT" to continue until the camera can work normally.

Install The application software

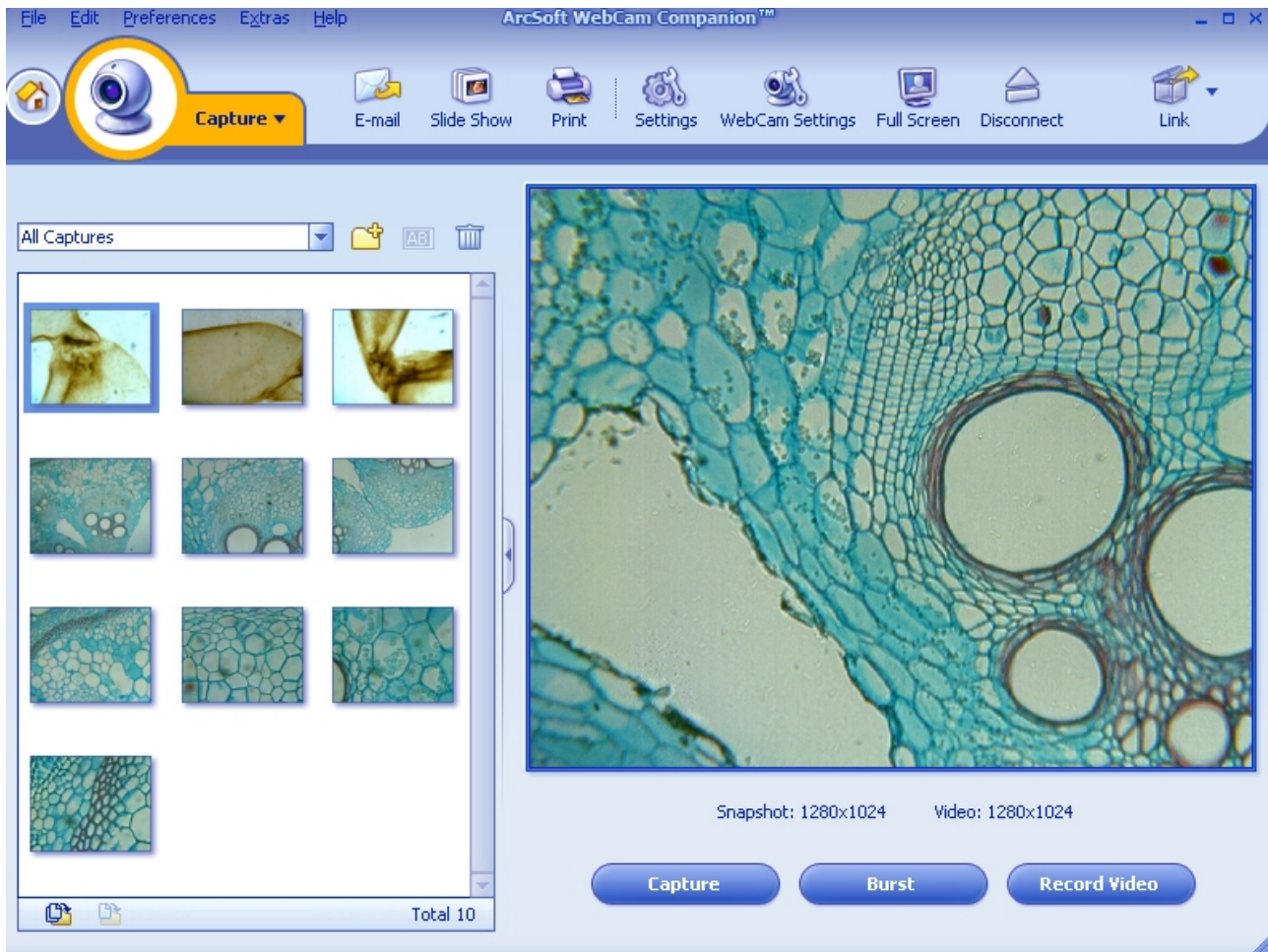
1. Click the" Webcam Companion2" to stall the application software.
2. Select the language and click the "**NEXT**" to continue
3. Setup Complete. Please click "**Finish**" button to exit install.

Using webcam companion2

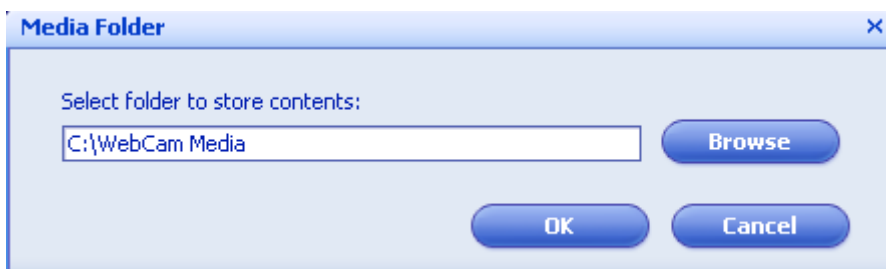
1 Select "start-Programs -- ArcSoft WebCam Companion2-- WebCam Companion2" or click the" shortcut webcam companion2" on the desktop to run the software.




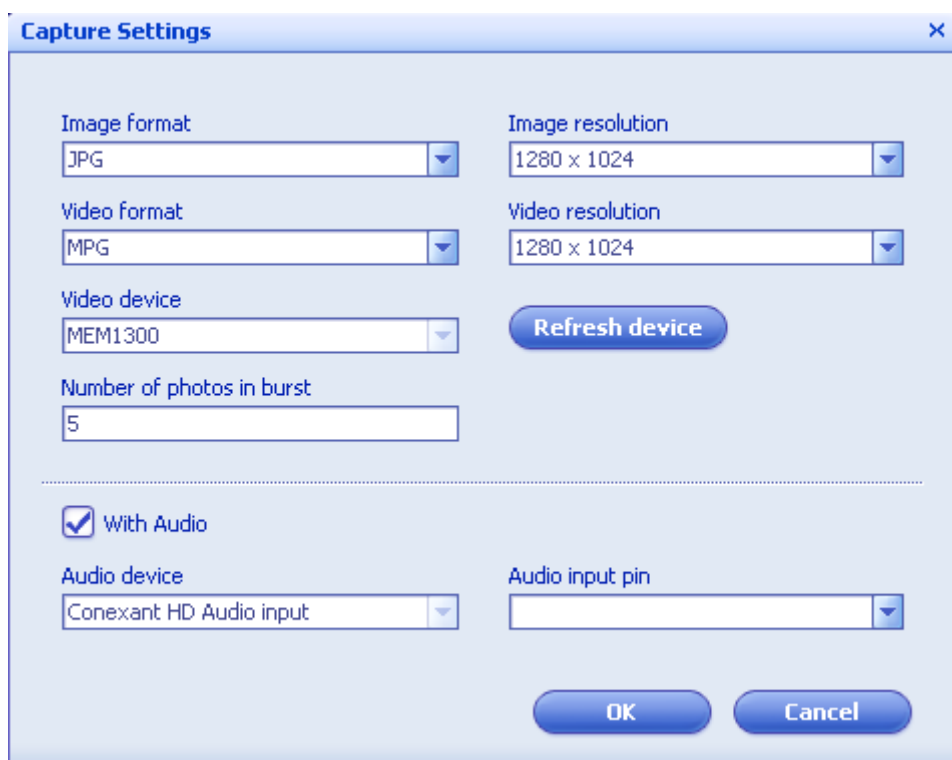
2 Please click “capturer” to start work with camera. You will see the following image



3 Before capturing, please select “preferences---Media folder” to save pictures or media which you want.



4 click  to choose the parameters you want to get.



5 click [WebCam Settings](#) to adjust the camera's preference.

PCE-ME 100 (1.3 megapixel) is professionally designed for microscope, which is usually to be connected to either microscope eyepiece tube or the trinocular c-mount. PCE-ME 100 captures stills photos of 1280*1024 pixel and video clips of 640*480 pixel. The special design of IC Board enables PCE-ME 100 offer true colour and bright image, and with a advanced imaging software you can create excellent microscopy reports by setting density, contrast, saturation, sharpness and exposing time. PCE-ME 100 keeps the balance between resolution and transmitting rate. It is hard to process a big image file on net, so more resolution is not always better.



SPECIFICATIONS

Sensor Parameter	1/2" 1.3 Mega Pixels CMOS
Max Resolution	1280*1024
USB Device	USB 2.0, 480 MB /s
Frame Rate	16 f/s @ 1280*1024
Preview Model	1280*1024, 640*480, 320*240
Pixels Size	5.2µm *5.2µm
Sensitivity	1.8 V/lux-sec@550nm
Spectrum response	400nm---1000nm
Shutter Type	ERS(electronic rolling shutter)
White Balance	Auto
Accessories	One adapter of Dia.30 mm for stereo microscope
USB cable length	1.5M
Operating System	Windows--XP2,Vista
Basic PC*	Pentium4 2.0GHz or more
	512MB RAM or more
	USB 2.0 Port
	17" Monitor or more big

PACKAGE

Unit package:19*13.4*8.6cm*3

Standars package:68*39*44.5cm*3

In this direction will find a vision of the measurement technique:

<http://www.industrial-needs.com/measuring-instruments.htm>

NOTE: "This instrument doesn't have ATEX protection, so it should not be used in potentially explosive atmospheres (powder, flammable gases)."