



## MANUAL PCE-MM200



## Introduction

Thank you for your choice of our product – it is a high-tech while easy to use Digital Microscope. With this unit you may see a unique & “bigger” world.

It is applicable in many fields such as visual inspection on electronic components, and materials in a full range of uses, beauty shop and education.

We recommend you reading this manual FIRST to get the best out of this unit.

## Computer System Requirements

- Microsoft Windows 2000, XP and Vista
- Pentium® 300 or AMD Athlon® processor or higher
- 100 Mb free hard disk space and 32 Mb or more of RAM
- 16 bit color display adaptor
- Available USB interface
- CD-ROM drive

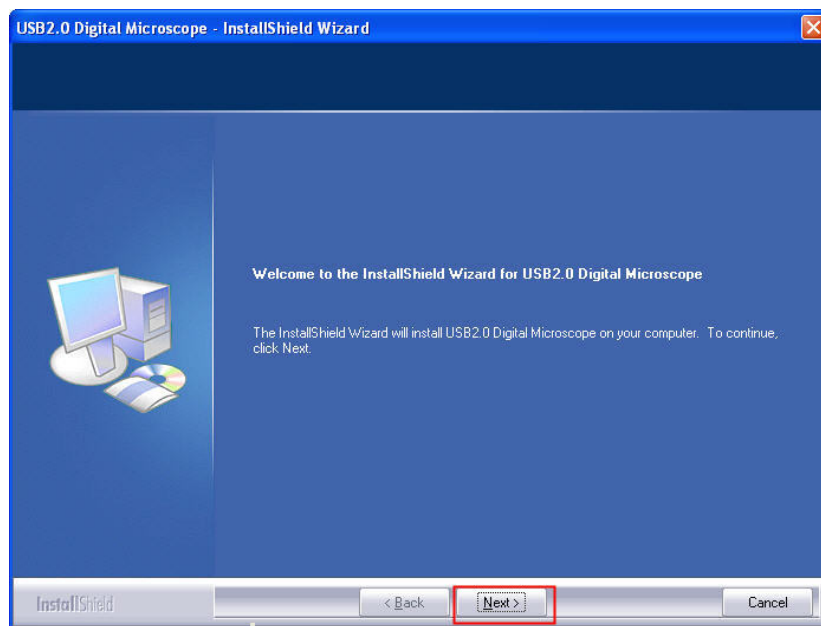
## Technical specifications

Image sensor	1.3 Mega pixels
Video capture resolution	1280 x 1024, 640 x 480, 320 x 240, 160 x 120
Still image capture resolution	1280 x 1024, 640 x 480, 320 x 240, 160 x 120
Color	24 bit RGB
Lens	Dual Axis 27x & 100x Microscope lens
Focus range	Manual focus from 10mm to infinity
Flicker frequency	50 Hz / 60 Hz
Frame rate	Max 30 f/s Under 600 Lux brightness
Magnification ratio	10x to 200x
Shutter speed	1 sec. To 1/1000 sec.
Video format	AVI format
White balance	Auto
Exposure	Auto
Light source	4 LED white lights
PC interface	Mini USB 2.0
Operation System	Windows 98SE / ME / 2000 / XP
OSD language	English
Power supply	5V DC from USB port
Size	110 mm (L) x 33 mm (R)

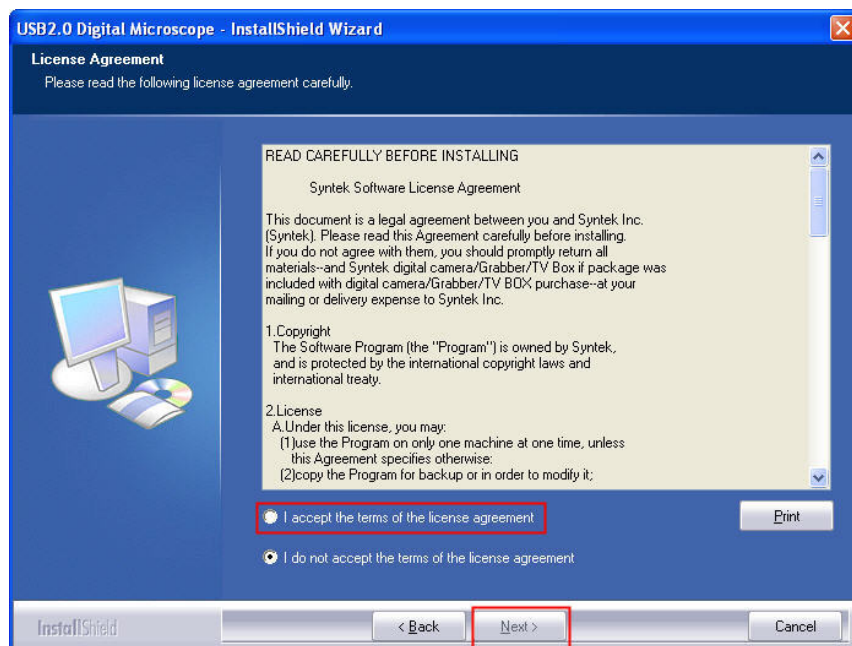
## Installing driver & software

Before attempting to install the software, make sure that you do not have the USB cable attached to computer. This may cause the installation to fail. Do not connect the cable to computer until the entire installation process has completed. We suggest you follow the step by step instructions that will appear on your screen during the installation process.

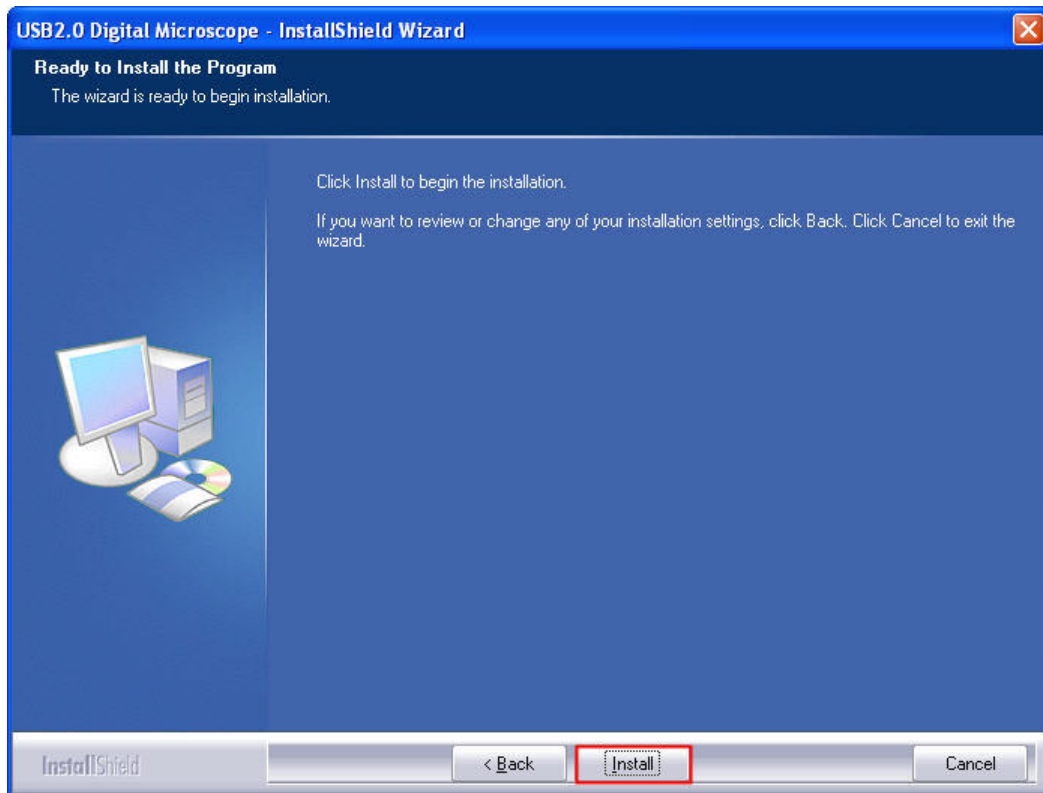
1. Insert the installation CD into your CD-ROM drive. Make sure that your camera is not connected to the computer.
2. Open directory of the drive and double click "Setup.exe". This will automatically launch the InstallShield Wizard which will walk you through the whole process. Click the "Next" button to continue.



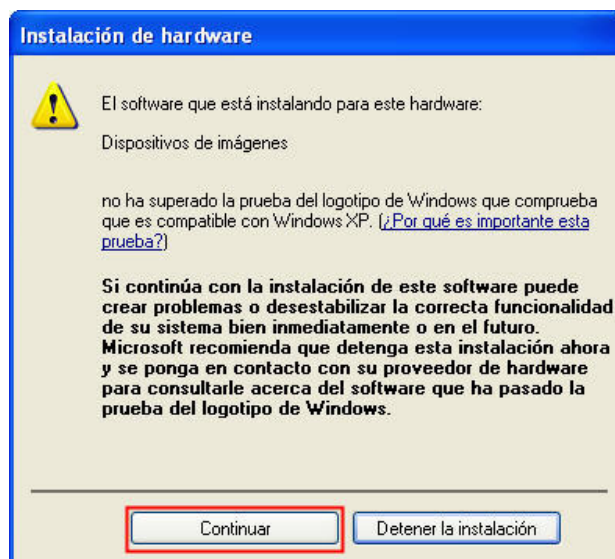
3. Please review the license terms, select "I accept the terms of the license agreement" and click "Next".



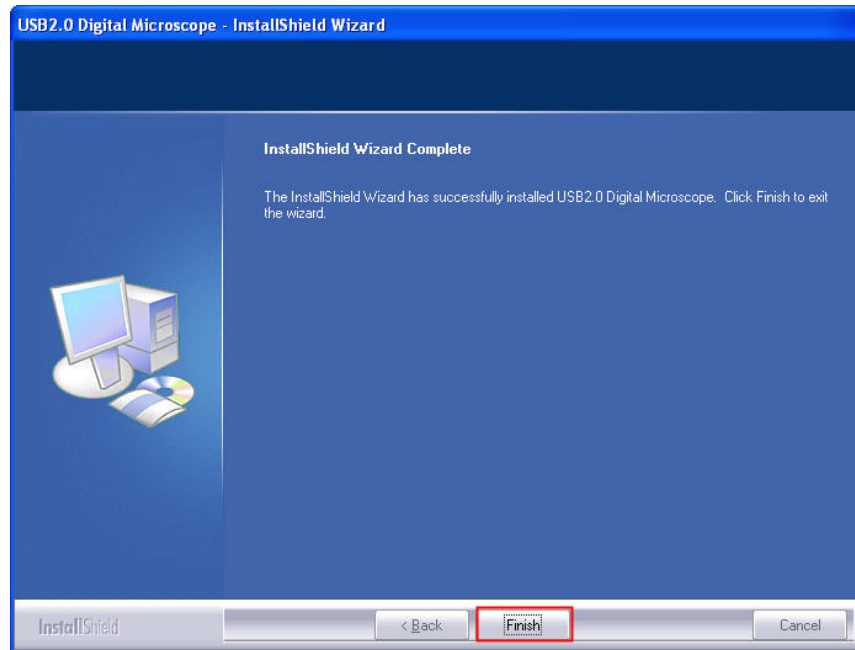
4. Click “Install” to set up the driver and software.



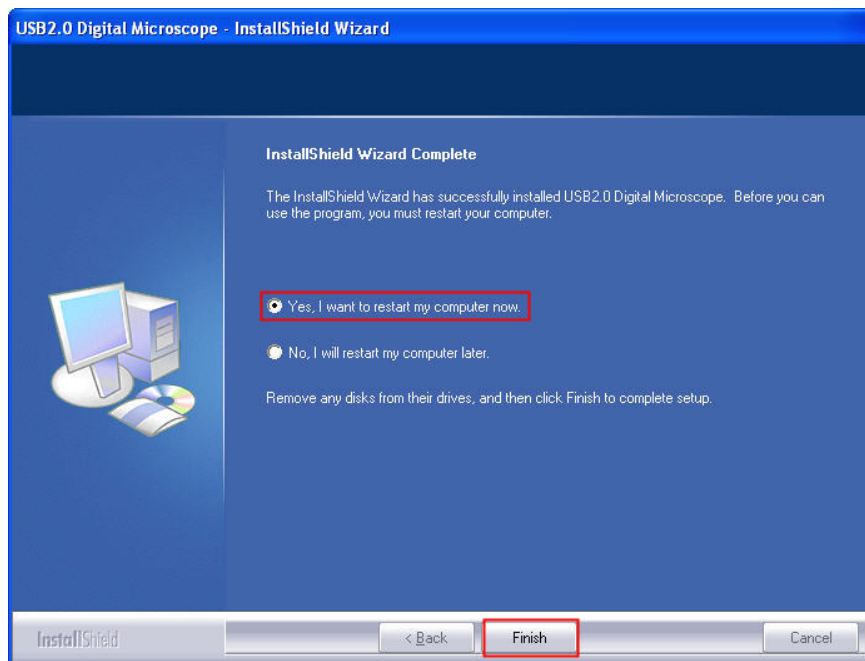
5. In this process a message box will appear on the screen. Please click on “Continue anyway”. (Some versions of drivers may not be tested by Windows Lab testing. However it is safe for both your software and hardware).



- Click “Finish” when the installation process is completed.



- Congratulations!! You have successfully installed the driver and “VideoView” software. Please reset the computer.



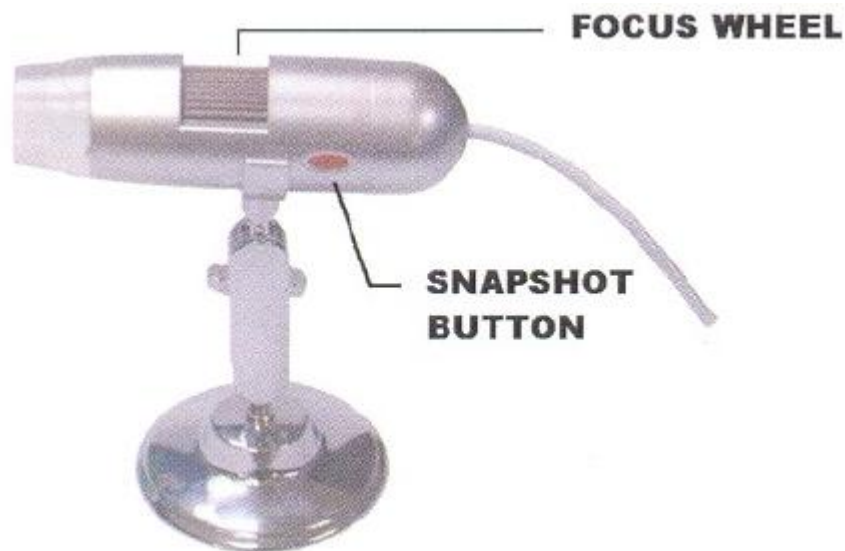
### Connecting the Microscope to Computer

- When using a Windows XP operating system, the following “Found new hardware wizard” screen will appear upon connecting the unit to your PC via the USB port. Select the “Install the software automatically (Recommended)” option and click the “Next” button.
- Click the “Continue Anyway” button on the message box that appears.
- Click the “Finish” button to exit the wizard. Now you may begin to use the Digital Microscope.

---

## Using the Digital Microscope

A quick look at the digital microscope



1. Use the FOCUS WHEEL to focus the microscope on the subject.
2. The SNAPSHOT BUTTON enables user capture snapshot.

### Software Setting

In the “Options” menu of “Digital Microscope” program, you may select “Video Capture Filter” or “Video Capture Pin” to set properties of the Digital Microscope.

### Maintenance

- This unit is a delicate equipment. Please handle it with care.
- Always use a dry cloth to wipe the device when necessary.
- If the lens gets dirty, clean it with a blower brush or a soft cloth moistened with a little neutral detergent. Be careful not to scratch the lens surface.
- Always replace the lens cap to avoid dust and moisture when the device is not in use.

In this direction will find a vision of the measurement technique:  
<http://www.industrial-needs.com/measuring-instruments.htm>

**NOTE:** "This instrument doesn't have ATEX protection, so it should not be used in potentially explosive atmospheres (powder, flammable gases)."