

# Laboratory Balances

## Symbols



**Internal adjustment (calibration):**  
Quick accuracy setting of the balance with internal adjusting weight (motor-driven).



**External adjustment (programme):**  
For quick accuracy setting of the balance. External adjusting weight required.



**Piece counting:**  
Reference quantities selectable. Display can be switched from piece count to weight.



**Data interface:**  
RS-232, to connect a printer or PC. The cable is included with the optional printer or software.



**Net-total weight:**  
Weight of tare cup and weight of components stored as two separate values.



**Animal weighing programme:**  
Filters abrupt movements, vibrations or if you weigh animals.



**Units:**  
Measurement units can be selected through the keypad, each scale has a different combination of units to choose from.



**Percentage determination:**  
Displays the deviation from the reference weight (= 100 %) in % instead of grammes.



**Weighing with tolerance range:**  
Upper and lower limiting can be programmed individually e.g. dosing / sorting.



**Protection against dust and water:**  
The degree of protection is specified in the symbol.



**Stainless steel:**  
Stainless steel scale for harsh industrial operating conditions.



**Fused aluminium:**  
Scale with fused aluminium housing, rugged and very stable.



**Power:**  
Rechargeable battery



**Mains adaptor:**  
230 V / 50 Hz, serial, country specific.



**Mains part:**  
Integrated in the scale, 230 V / 50 Hz.



**Tare:**  
Reset displayed value to "0" during weighing process.

## PCE-JS 50

### Highest resolution and carat switch

- Cover to protect the scale from damage
- Tare for full weighing range
- Overload indicator
- Auto shut-off after 1 minute of inactivity
- Pan Ø 38 mm, scoop, tweezers, bag and control weight included in the delivery (the control weight is only to check the balance)



10 g control weight included (not for calibration)



### Technical specifications

Model	Range Max.	Readability d	Repeat- ability	pan size
PCE-JS 50	50 g / 250 ct	0.001 g / 0.01 ct	0.002 g / 0.02 ct	Ø 22 mm
Tara	full range			
Units	g, ct, dwt, oz			
Display	LCD with backlight			
Calibration	with external test weight (50 g)			
Power	3 batteries LR44			
Dimensions	145 x 95 x 40 mm			
Weight	170 g			
Contents	10 g control weight, batteries scoop, tweezers, bag			

Model No.	Description
PCE-JS 50	PCE-JS 50 pocket balance

### Optional accessories

CW-F2-50	Calibration weight 50 g, class F2, incl. plastic box
CAL-PCE-JS	Calibration certificate

## PCE-DMS 200

Scale for flat surfaces up to  
20,000 g/m<sup>2</sup> and a resolution of 1 g/m<sup>2</sup>

- Displays in g/m<sup>2</sup> when a 100 cm<sup>2</sup> sample is placed on the scale
- Draught shield included
- Conversion from g/m<sup>2</sup> into g via the keypad
- Powered by 230V mains or batteries
- Auto shut-off
- Large LCD
- Round probe cutter of 100 cm<sup>2</sup> (optional)



**MPC-3**  
100cm<sup>2</sup> round mechanical sample cutter for paper and fabric

- Maximum thickness: 5mm
- Cutter dimensions: 100cm<sup>2</sup>
- Weight: 1700g
- Dimensions: 165mm x 115mm
- 4 blades



### Technical specifications

Model	Maximum Range	Readability d	Linearity	Pan size mm
PCE-DMS 200	200 g 20,000 g/m <sup>2</sup>	0.01 g 1 g/m <sup>2</sup>	±0.02	Ø 100
Units	g/m <sup>2</sup> , g, oz y oz/m <sup>2</sup>			
Display	LCD with backlight			
Calibration	with external test weight (not included)			
Power	mains adaptor or 6 AA batteries			
Dimensions	145 x 210 x 40 mm			
Weight	500g			

### Contents

PCE-DMS 200 paper scale, draught shield, mains adaptor and operator's manual (For U.K. customers: incl. U.K. AC Mains Power Adaptor)

Model No.	Description
PCE-DMS 200	Paper scale

### Optional accessories

CAL-PCE-BS	ISO certificate
MPC-3	Round sample cutter; for materials up to 5mm thick
MPC-UL	Rubber plates for round sample cutter (10 units)
MPC-EK3	Spare blades for the MPC-3 (50 units)

## Serie PCE-MB

### Moisture analysis balance with several functions



The PCE-MB moisture analysis balance is ideal for industrial and laboratory applications. The moisture balance is an accurate device for the determination of moisture content in small samples of materials by drying the sample with halogen heaters. The moisture analyser balance is used as a moisture measurement tool as well as determining dryness content. You will find several examples in the user's manual. The moisture analyzer uses heaters (2 x 200 Watts) to dry the sample in conjunction with a precision balance to measure the minute changes in weight as the sample dries. In general, these units can be used in research, development and quality control. You only need to place a small sample into the balance, close the cover, press the key and read the result (content of moisture or dryness). It can also work as a standard mg-balance. You will be able to determine the moisture of several materials such as granulates, plastics, wood, pharmaceutical substances, tobacco, tea, cereals, etc. The drying process is carried out in only a few minutes depending on the humidity of materials (extreme samplings: residual water / powdered substances).

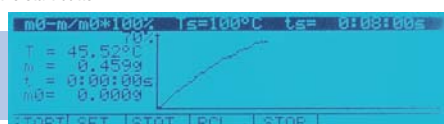
Moisture and dryness control can be carried out in three different ways:

- Automatic: drying to constant weight
- Semi-automatic: drying stops when loss per unit of time goes below theoretical value
- Manual: by preset time (between 2 min and 9 h 59 min)

Moisture analysis balance includes:

- RS-232 interface for data transfer to a PC
- External calibration function
- 230 V mains adaptor

To the right, the image shows the balance open allowing the material to be placed inside for drying. The moisture process begins when you close the cover and press the start button.



#### Technical specifications

Model	Weight range Max	Readability d	Verification value e g	Minimum load Min g	Repeatability	Weighing plate mm
PCE-MB 50	50 g 0 to 100 % absolute moisture 100 to 0 % dryness weight	0.001 g 0.01 %	-	-	0.001 g 0.02 %	Ø 90
PCE-MB 100	100 g 0 to 100 % absolute moisture 100 to 0 % dryness weight	0.001 g 0.01 %	-	-	0.001 g 0.02 %	Ø 90
PCE-MB 200	200 g 0 to 100 % absolute moisture 100 to 0 % dryness weight	0.001 g 0.01 %	-	-	0.001 g 0.02 %	Ø 90
Tare range	full range					
Heating unit	2 quartz halogen heaters (200 W each)					
Temperature range	+50 to +160 °C					
Sampling interval	2 min to 9 h 59 min (in increments of 1 sec.)					
Work mode / Drying sequence	automatic, semi-automatic, manual					
Drying mode	you can watch it in the screen through a diagram					
Displayed units	humidity [%] / weight loss, dry mass [%] ATRO / residual weight, date and hour					
Memory	160 (to memorize user programmable drying curves)					
Display	Large graphic display with menu in several languages					
Calibration	external calibration (with external calibration weight)					
Interface	RS-232					
Operating temperature	+18 to +30 °C					
Power	230 V / 50 Hz					
Enclosure / Ingress protection	die cast aluminium / IP 54					
Dimensions / Weight	235 x 245 x 260 mm / approx. 8 kg					



#### Included in the delivery

PCE-MB moisture analysis balance (one of our models), 10 aluminium sample plates, mains adapter and operator's manual (For U.K. customers: incl. U.K. AC Mains Power Adaptor)

Model No.	Description
PCE-MB 50	PCE-MB 50 Moisture analysis balance
PCE-MB 100	PCE-MB 100 Moisture analysis balance
PCE-MB 200	PCE-MB 200 Moisture analysis balance

#### Optional accessories

CAL-PCE-MB	ISO certificate
PCE-SOFT-MB	Software with RS-232 interface
RS232-USB	RS-232 to USB adaptor
PCE-BP1	Thermal printer with RS-232 data cable
PCE-MB-PS	Aluminium sample plates, Pack of 50 units
PCE-MB-GF	Glass fiber filters, Pack of 100 units
CW-F2-50	Calibration weight of 50 g, class F2, tolerance $\pm 1.0$ mg with plastic box for PCE-MB 50 model
CW-F2-100	Calibration weight of 100 g, class F2, tolerance $\pm 1.5$ mg with plastic box for PCE-MB 100 model
CW-F2-200	Calibration weight of 200 g, class F2, tolerance $\pm 3.0$ mg with plastic box for PCE-MB 200 model



PCE-BP1 printer  
(optional)

# Laboratory Balances

## Serie PCE-BS

Cheap and accurate series of balances with RS-232 interface and a lot of accessories



The PCE-BS series of tabletop balances has a good price/quality relationship. The removable stainless steel weighing pan allows the balance to be cleaned easily. It's accurate to within 0.01g (the PCE-BS 300 model) which makes this an attractive balance. As standard equipment, it comes with a piece counting function (PCE-BS 300 / 3000 models). If the balance is used in a laboratory, it can be powered by the external mains adaptor. In cases where the balance is mainly used as a mobile weighing instrument, it can be powered by AA batteries. All the balances in this series have four adjustable levelling feet for optimal results and a water level to setup the balance on a flat surface. A plastic windshield is also included in the delivery to protect the balance against the influence of wind currents. You can also purchase optional calibration weights for a quick adjustment or check of the tabletop balance. The balance can be sent to us if you require an ISO calibration certificate or a regular recalibration. This can also be done in an accredited laboratory.

- Programme to quickly set the balance accurately using external adjusting weights
- Piece counting function adjustable between 10, 20, 50 or 100 pieces, piece / weight conversion (only for PCE-BS 300 and PCE-BS 3000 models)
- RS-232 interface for connection to a computer or printer
- Tare function in the middle of the range (you can use it repeatedly)
- Automatic display backlight (if the balance is stable, the display will show the stability symbol and the light brightens)
- Several weighing units that you can select through the keypad (g, oz, lb, oz, ct, gn, for the PCE-BS 3000 and PCE-BS 6000 models / g, kg, lb, oz for the PCE-BS 300 models)
- 230 V serial mains adaptor included
- It can also be powered by batteries
- Removable stainless steel weighing pan (it fits over the plastic pan support)
- ISO calibration certificate is optional (e.g. to meet with DIN ISO 9000)

Plate: Ø 95 mm

Pan: 160 x 135 mm



### Technical specifications

Model	Weight range Max	Readability d	Verification value e	Minimum load Min	Repeatability	Linearity	Piece counting weight minimum	Weighing pan
PCE-BS 300	300	0.01	-	-	0.01	±0.03	0.02	Ø 95
PCE-BS 3000	3000	0.1	-	-	0.1	±0.2	0.2	160 x 135
PCE-BS 6000	6000	1	-	-	1	±2	- - -	160 x 135
Tare range	50 % of weighing range							
Response time	3 sec.							
Weight units	g, kg, oz, lb							
Display	15 mm LCD with backlight							
Calibration	automatic (with optional external weight)							
Interface	RS-232							
Operating temperature	+10 to +30 °C							
Power	230V / 50 Hz (12 V adaptor) or 6 AA batteries							
Enclosure	ABS plastic							
Windshield	plastic / 145 x 145 x 120 mm (only for PCE-BS 300)							
Ingress protection	IP 54							
Dimensions	165 x 245 x 70 mm							
Weight	600g							

### Contents

PCE-BS balance (one of our models), weighing pan, mains adaptor and user's manual; PCE-BS 300 balance includes a plastic windshield (For U.K. customers: incl. U.K. AC Mains Power Adaptor)

Model No.	Description
PCE-BS 300	PCE-BS 300 Precision balance
PCE-BS 3000	PCE-BS 3000 Precision balance
PCE-BS 6000	PCE-BS 6000 Precision balance

### Optional accessories

CAL-PCE-BS	ISO calibration certificate
PCE-SOFT-BS	Software with RS-232 cable
RS232-USB	RS-232 to USB adaptor
PCE-BP1	Thermal printer with RS-232 data cable
CW-M1-200	Calibration weight of 200 g, class M1, tolerance ±10 mg, with plastic box for PCE-BS 300
CW-M1-2000	Calibration weight of 2000 g, class M1, tolerance ±100 mg, with plastic box for PCE-BS 3000
CW-M2-6000	Calibration weight of 6000 g (1000 g and 5000 g into a box), class M2, tolerance ±1 g, for PCE-BS 6000



PCE-BP1 printer (optional)

## Serie PCE-BSH

Up to 10,000 g



The PCE-BSH series balance has a good price/quality relationship. In comparison with the PCE-BT series, this balance possesses a higher weighing range. The PCE-BSH 6000 series is accurate to within 0.1 g and the PCE-BSH 10000 series to within 0.2 g which makes these balances uniquely accurate tools. All the balances from this series have levelling feet and a water level to ensure the unit is level. With optional calibration weights you can adjust the balance whenever you want.

- Programme to quickly set the balance's accuracy. External adjusting weight required
- Piece counting function: reference quantities selectable. Display can be switched from piece (pcs) to weight.
- RS-232 interface for data transfer
- Tare function in the middle of the range (you can use it several times)
- Automatic backlight
- Stability indication
- Selectable weighing units through the keyboard
- Protection against dust and water jet (IP 54)
- 230 V serial adapter included in the delivery
- Removable stainless steel plate
- It can be powered by batteries
- ISO certificate (optional)

Weighing pan: 170 x 180 mm



### Technical specifications

Model	Weight range Max	Readability d	Repeatability	Linearity	Piece counting weight minimum
PCE-BSH 6000	6000	0.1	0.1	±0.2	0.3
PCE-BSH 10000	10000	0.2	0.2	±0.4	0.6
Tare range	50 % of weighing range				
Response time	3 sec.				
Units	g, kg, oz, lb				
Display	LCD of 15 mm with backlight				
Calibration	automatic (with external test weight)				
Operating conditions	+10 to +30 °C				
Power	230 V / 50 Hz (12 V adaptor) or 6 AA batteries				
Enclosure	ABS plastic				
Ingress protection	IP 54				
Weighing pan	170 x 180 mm				
Dimensions	180 x 245 x 70 mm				
Weight	680 g				

### Contents

PCE-BSH balance (one of our models), weighing plate, mains adaptor and user's manual (For U.K. customers: incl. U.K. AC Mains Power Adaptor)

Model No.	Description
PCE-BSH 6000	PCE-BSH 6000 Precision balance
PCE-BSH 10000	PCE-BSH 10000 Precision balance

### Optional accessories

CAL-PCE-BSH	ISO calibration certificate
PCE-SOFT-BSH	Software with RS-232 cable
RS232-USB	RS-232 to USB adaptor
PCE-BP1	Thermal printer with RS-232 data cable
CW-M1-5K	5000 g calibration weight, class M1, tolerance ±250 mg, for the PCE-BSH 6000 and PCE-BSH 10000

## Serie PCE-BT

Balance with high resolution



PCE-BT series precise technical scales are intended for wide use in laboratories, production control, sorting plants, etc. Aesthetic design and easy handling are their primary advantages. Despite their small size and low price, these scales ensure high weighing accuracy required in practice. The scale has numerous special functions: automatic reset, calculation in changed mass units (ct and lb), counting identical pieces, calculation of percentage mass changes, recipe making, remembering entered tare weight. PC interface allows connecting a computer or a printer for printing notes, reports or for for archiving weighing results on the computer.

- Two models are available
- clearly visible LCD
- Percentage determination, displays the deviation from the reference weight
- Tare function
- Piece counting
- RS-232 interface for data transfer
- Powered by battery or mains
- Plastic windshield included in the delivery
- ISO certificate and calibration weight (optional)



### Technical specifications

Model	Weight range Max	Readability d	Repeatability	Piece counting weight minimum	Weighing pan
PCE-BT 200	200	0.001	0.001	0.003	Ø 115
PCE-BT 2000	2000	0.01	0.01	0.03	145 x 125
Tare range	full range				
Response time	3 s				
Display	LCD				
Calibration	automatic (with external test weight)				
Operation conditions	+18 to +33 °C				
Power	230 V / 50 Hz (12 V adaptor) or 6 AAA batteries				
Enclosure	ABS plastic				
Ingress protection	IP 54				
Dimensions	75 x 245 x 80 mm				
Weight	1000 g				

### Contents

PCE-BT balance (one of our models), weighing plate, plastic windshield, mains adaptor and user's manual (For U.K. customers: incl. U.K. AC Mains Power Adaptor)

Model No.	Description
PCE-BT 200	PCE-BT 200 Precision balance
PCE-BT 2000	PCE-BT 2000 Precision balance

### Optional accessories

CAL-PCE-BT	ISO calibration certificate
PCE-SOFT-BT	Software with RS-232 cable
RS232-USB	RS-232 to USB adaptor
K-CW-F2-200	Calibration weight of 200 g, class F2, tolerance ±3.0 mg
K-CW-F2-2000	Calibration weight of 2000 g, class F2, tolerance ±30 mg



# Laboratory Balances

## Serie PCE-LSM

High quality, verifiable balance for laboratory applications, three models available



You have no doubt experienced the situation that you have needed a verifiable laboratory balance on occasion. The LSM laboratory balance is suited for these occasions. It has a windshield (for the PCE LSM 200) to protect against exterior elements. The capacity indicator which is on the left side of the display, allows you visualize the available weighing range by way of a graphic band. With this precise balance you are able to weigh and value jewels and precious stones, you will also be able to use it as a classic laboratory balance in production or in research and development.

- Programme to quickly set the balance accurately using external adjusting weights
- Aluminium enclosure with levelling feet and a water level
- Stainless steel weighing plate which can be removed for cleaning
- Weight, net-total weight, doses, piece count
- 18 mm LCD with backlight
- Tare in the full range (you can use it repeatedly)
- Vibration absorption
- RS-232 interface/ Software (optional)
- Ingress protection IP 54 against dust and water jet
- 230 V serial mains adaptor
- ISO certificate (optional) (to meet with DIN ISO 9000 standard)
- Verification in place (through the official organism)



PCE-LSM 6000  
Weighing plate: 225 x 165 mm

### Technical specifications

Model	Weight range Max g	Readability d g	Verification value e g	Minimum load Min g	Reproducibility g	Linearity g	Piece count weight minimum g	Weighing pan mm
PCE-LSM 200	200	0.001	0.01	0.02	0.001	±0.002	0.006	Ø 120
PCE-LSM 2000	2000	0.01	0.1	0.2	0.01	±0.02	0.06	Ø 150
PCE-LSM 6000	6000	0.5	0.5	25	0.1	±0.2	0.6	225 x 165
Tare range	full range							
Response time	5 sec.							
Units	g, kg, %							
Display	18 mm LCD with backlight							
Interface	RS-232							
Calibration	automatic (with external test weight)							
Operating temperature	+18 to +33 °C							
Power	230 V/ 50 Hz (12 V mains adaptor)							
Enclosure	die cast aluminium							
Windshield	included in the PCE-LSM 200 and PCE-LSM 2000 models (Ø 130 x 60 mm or Ø 160 x 60 mm)							
Ingress protection	IP 54							
Dimensions	240 x 275 x 90 mm							
Weight	4 kg							

### Contents

PCE-LSM laboratory balance (one of our models), weighing plate, mains adaptor and user's manual; PCE-LSM 200 and PCE-LSM 2000 models with windshield (For U.K. customers: incl. U.K. AC Mains Power Adaptor)

Model No.	Description
PCE-LSM 200	PCE-LSM 200 Laboratory balance
PCE-LSM 2000	PCE-LSM 2000 Laboratory balance
PCE-LSM 6000	PCE-LSM 6000 Laboratory balance

### Optional accessories

VER-PCE-LSM	M class II Legal for trade verification
CAL-PCE-LSM	ISO certificate
PCE-LSM-TOL	Option: Balance with weight tolerance function, with acoustic signal to reset the upper or lower value limits that can be established independently (an installation of these option isn't possible later)
PCE-SOFT-LSM	Software with RS-232 cable
RS232-USB	RS-232 to USB adaptor
PCE-BP1	Thermal printer with RS-232 data cable
PCE-AB-DB	Density determination kit (only for PCE-LSM 200)
CW-F2-200	200 g calibration weight, class F2, tolerance ±3.0 mg, plastic box for the PCE-LSM 200 model
CW-F2-2000	2000 g calibration weight, class F2, tolerance ±30 mg, plastic box for the PCE-LSM 2000 and PCE-LSM 6000 models



PCE-BP1 printer  
(optional)

## Serie PCE-LS

### Verifiable laboratory balance



The LS series balance is an attractive product due to its high accuracy, its multiple functions and its low price. It is an exceptional instrument. Its well designed die cast aluminium enclosure provides durability. The graphic display with capacity indicator allows the results to be read easily. With the help of optional software you will be able to transfer data to a computer. If your computer only has a USB interface, you can request an optional RS-232 to USB adaptor. All LS models can be calibrated / adjusted automatically at the touch of a key, or can measure at a pre-set time, or triggered by temperature changes. Without the need to handle expensive external weights, these functions support integration in quality management systems. You can also verify your balance by an official authority. Other accessories like a density determination set make this balance valuable.

- Piece counting for the PCE-LS model: user can select number of reference pieces, display can be switched from piece to weight
- Programme to quickly adjust settings if there are some oscillations of  $\pm 1^\circ\text{C}$  or after an period of time. This adjustment is made using an internal adjusting weight (motor-driven)
- Date and time adjustment (user password can be entered)
- RS-232 interface for PC. It allows you connect the balance to a PC
- Capacity indicator: the display with backlight shows available ranges
- Die cast aluminium enclosure guarantees high stability
- Water level to properly setup the balance
- IP 54 protection against dust and water jet
- Calibration certificate (optional) (e.g. to meet DIN ISO 9000 standard)
- Verifiable (through the regulating body)



PCE-LS 500  
Weighing plate: Ø 120 mm

PCE-LS 1000 & PCE-LS 3000  
Plate: 165 x 165 mm

### Technical specifications

Model	Weight range Max g	Readability d g	Verification value e g	Minimum load Min g	Repeatability g	Linearity g	Piece count weight minimum g	Weighing plate mm
PCE-LS 500	500	0.001	0.01	0.02	0.0015	$\pm 0.002$	0.006	Ø 120
PCE-LS 1000	1000	0.01	0.1	0.5	0.015	$\pm 0.03$	0.06	165 x 165
PCE-LS 3000	3000	0.01	0.1	0.5	0.015	$\pm 0.03$	0.06	165 x 165
Tare range	full range							
Response time	< 5 sec.							
Units	g, kg, lb							
Display	graphic LCD with backlight, capacity display							
Calibration	- internal calibration (with internal, motor driven, calibration weight) - external calibration (using optional external calibration weights)							
Interface	RS-232							
Piece counting	yes, selectable reference quantities							
Vibration absorption	internal vibration dampening							
Operating temperature	$+18$ to $+30^\circ\text{C}$							
Power	230 V / 50 Hz (12 V adaptor)							
Enclosure	die cast aluminium							
Ingress protection	IP 54							
Dimensions	210 x 320 x 90 mm							
Weight	approx. 5 kg							



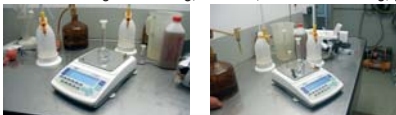
### Contents

PCE-LS laboratory balance (one of our models), weighing plate, mains adaptor and user's manual (For U.K. customers: incl. U.K. AC Mains Power Adaptor)

Model No.	Description
PCE-LS 500	PCE-LS 500 Laboratory balance
PCE-LS 1000	PCE-LS 1000 Laboratory balance
PCE-LS 3000	PCE-LS 3000 Laboratory balance

### Optional accessories

VER-PCE-LS	M class II Legal for trade verification
CAL-PCE-BS	ISO certificate
PCE-LS-TOL	Option: Balance with weight tolerance function, with acoustic signal to reset the upper or lower value limits that can be established independently (an installation of these option isn't possible later)
PCE-SOFT-LS	Software with RS-232 cable
RS232-USB	RS-232 to USB adaptor
PCE-BP1	Thermal printer with RS-232 data cable
CW-F1-500	Calibration weight of 500 g, class F1 tolerance $\pm 2.5$ mg, plastic box for PCE-LS 500 model
CW-M1-500	Calibration weight of 500 g, class M1, tolerance $\pm 25$ mg, plastic box for PCE-LS 1000 model
CW-F2-2000	Calibration weight of 2000 g, class F2, tolerance $\pm 30$ mg, plastic box for PCE-LS 3000 model



PCE-BP1 printer  
(optional)

# Laboratory Balances

## Serie PCE-ABZ C

Balance with high resolution and multiple functions



The PCE-ABZ series analytical balance is a laboratory balance that accurately determines weight in grams and in milligrams. With the windshield, which is included in the delivery, external influences such as air currents will be eliminated. The die cast aluminium enclosure is of solid design. With the help of optional software and cable, data can be transferred directly to a computer, which saves time and ensures reading accuracy.

- With windshield and two sliding doors
- PCE ABZ analytical balance piece counting: user selectable number of reference pieces, display can be switched from piece to weight
- RS-232 interface to connect the balance to a computer to further assess data
- Capacity indicator (at the right side of the display and indicates the weight range that is available)
- Tare range across the entire weight range
- Rugged die cast aluminium enclosure
- Water level to properly setup the analytical balance
- Internal vibration suppression
- ISO certificate (optional) (to meet DIN ISO 9000 standard)



### Technical specifications

Model	Weight range Max g	Readability d mg	Verification value e mg	Minimum load Min mg	Repeatability mg	Linearity mg	Piece count weight minimum mg	Weighing plate mm
PCE-ABZ 100C	100	0.1	-	-	0.15	±0.2	0.6	Ø 90
PCE-ABZ 200C	200	0.1	-	-	0.15	±0.2	0.6	Ø 90
Tare range	full range							
Response time	< 5 sec.							
Units	g, kg, oz, lb							
Display	LCD with backlight							
Calibration	external calibration (with external calibration weight)							
Interface	RS-232							
Piece counting	yes, selectable reference quantities							
Vibration dampening	internal vibration suppression							
Operating temperature	+18 to +30 °C							
Power	230 V / 50 Hz							
Enclosure	die cast aluminium							
Ingress protection	IP 54							
Weighing plate dimensions	175 x 140 x 230 mm							
Overall dimensions	235 x 345 x 350 mm							
Weight	approx. 6.0 kg							



### Contents

PCE-ABZ C analytical balance (one of our models), weighing plate, glass windshield, mains cable and user's manual (For U.K. customers: incl. U.K. AC Mains Power Adaptor)

Model No.	Description
PCE-ABZ 100C	PCE-ABZ 100C Analytical balance
PCE-ABZ 200C	PCE-ABZ 200C Analytical balance

### Optional accessories

CAL-PCE-ABZ	ISO certificate
PCE-SOFT-ABZ	Software with RS-232 cable
RS232-USB	RS-232 to USB adaptor
PCE-BP1	Thermal printer with RS-232 data cable
PCE-SIA	Antivibration table, 450 x 450 x 100 mm
CW-E2-100	Calibration weight of 100 g, class E2, tolerance ±0.15 mg, plastic box for PCE-ABZ 100 C model
CW-E2-200	Calibration weight of 200 g, class E2, tolerance ±0.30 mg, plastic box for PCE-ABZ 200C model



PCE-BP1 printer  
(optional)

## Serie PCE-AB

Verifiable analytical balance with internal adjustment control



This PCE AB analytical balance is a verifiable device that can determine weight in grams and milligrams. With the windshield, which is included, external influences such as air current can be decreased. We also offer an optional antivibration table that minimizes the influence of strong vibrations on the balance (e.g. if it is placed near machines in the production area). The graphic display with capacity indication facilitates the reading of results. With the help of the optional software set, you will be able to transfer data to a computer. As well as automatic internal calibration, you can do an external calibration with the optional calibration weights (only if the balance is not verified).

- With windshield and two sliding doors
- Piece counting with the PCE AB analytical balance: user selectable number of reference pieces by user, display can be switched from piece to weight
- RS-232 interface for connection to a computer
- Capacity indicator: the display with backlight indicates the weight range available
- Tare range across 100 % of weight range
- Rugged die cast aluminium enclosure
- Water level to setup the analytical balance
- Internal vibration suppression
- 230 V serial mains adaptor
- ISO certificate (e.g. to meet DIN ISO 9000 standard)
- Optional M class I verification



### Technical specifications

Model	Weight range Max g	Readability d mg	Verification value e mg	Minimum load Min mg	Repeatability mg	Linearity mg	Piece count weight minimum mg	Weighing plate mm
PCE-AB 100	100	0.1	1	10	0.15	±0.2	0.6	Ø 90
PCE-AB 200	200	0.1	1	10	0.15	±0.2	0.6	Ø 90
Tare range	full range							
Response time	< 5 sec.							
Units	g, kg, oz, lb							
Display	graphic LCD with backlight and capacity indicator							
Calibration	- internal calibration (with internal, motor driven, calibration weight) - external calibration (using optional external calibration weights)							
Interface	RS-232							
Piece counting	yes, user selectable reference quantities							
Vibration dampening	internal vibration suppression							
Operating temperature	+18 to +30 °C							
Power	230 V / 50 Hz (12 V adaptor)							
Enclosure	die cast aluminium							
Ingress protection	IP 54							
Weighing plate dimensions	175 x 140 x 230 mm							
Dimensions	235 x 345 x 350 mm							
Weight	approx. 6.5 kg							



also available as PCE-AB 100C / PCE-AB 200C  
without graphical display



Graphical display with load bargraph  
(capacity indicator)

### Contents

PCE-AB analytical balance (one of our models), weighing plate, glass wind shield, mains cable and user's manual (For U.K. customers: incl. U.K. AC Mains Power Adaptor)

Model No.	Description
PCE-AB 100	PCE-AB 100 Analytical balance
PCE-AB 200	PCE-AB 200 Analytical balance
PCE-AB 100C	PCE-AB 100C Analytical balance, same as PCE-AB 100 but without graphical LCD
PCE-AB 200C	PCE-AB 200C Analytical balance, same as PCE-AB 200 but without graphical LCD

### Optional accessories

VER-PCE-AB	M class I Legal for trade verification
CAL-PCE-AB	ISO certificate
PCE-SOFT-AB	Software with RS-232 cable
RS232-USB	RS-232 to USB adaptor
PCE-BP1	Thermal printer with RS-232 data cable
PCE-SIA	Antivibration table, 450 x 450 x 100 mm
CW-E2-100	Calibration weight of 100 g, class E2, tolerance ±0.15 mg, plastic box for PCE-AB 100 model
CW-E2-200	Calibration weight of 200 g, class E2, tolerance ±0.30 mg, plastic box for PCE-AB 200 model



PCE-BP1 printer  
(optional)



# Industrial Balances

## PCE-WS 30

Economical industrial balance for up to 30 kg and highly accurate



Compact balance for professional use with memory function. This compact balance is the perfect tool when you need to determine large weights up to 30kg. For levelling, all the balances of this range come with adjustable feet and a water level integrated into its casing. Via the keypad, a preset tare weight can be input. The compact balance has an RS-232 port. Using optional software, readings can be transferred to a computer. The balance is powered by a 230V mains adaptor or by an internal rechargeable battery. This allows the compact balance to be mobile.

- Economical balance with quality accessories
- Weight tolerance with programmable limits
- Preset tare weight input using keypad
- Tara across entire range and can be repeated numerous times
- Memory for 99 readings
- External calibration
- Easy to clean
- Powered by an internal rechargeable battery or a 230V mains adaptor
- RS-232 interface
- Optional: software and ISO calibration certificate



### Technical specifications

Model	Weight range Max kg	Readability d g	Verification value e g	Minimum load Min g	Repeatability g	Linearity g	Piece count weight minimum g	Weighing plate mm
PCE-WS 30	30	0.5	-	-	0,5	±1	1	230 x 310
Tara range	full range							
Response time	2 sec.							
Units	g, kg, lb							
Function	99 storage values, weighing with tolerance range preset tare weight via keypad							
Display	6 digit LCD with backlight							
Interface	RS-232							
Calibration	automatic (with optional external calibration weights)							
Operating temperature	0 to +40 °C							
Power	230 V / 50 Hz (via 12 V adaptor) or rechargeable battery							
Enclosure	ABS plastic							
Weighing plate	stainless steel (removable)							
Protection	IP 54							
Dimensions	320 x 320 x 125 mm							
Weight	2.8 kg							

### Contents

PCE-WS 30 industrial balance, weighing pan, internal rechargeable battery, mains adaptor and user's manual (For U.K. customers: incl. U.K. AC Mains Power Adaptor)

Model No.	Description
PCE-WS 30	PCE-WS 30 industrial balance

### Optional accessories

CAL-PCE-WS	ISO certificate
PCE-SOFT-WS	Software with RS-232 cable
RS232-USB	RS-232 to USB adaptor

## Serie PCE-PCS

Programmable counting balance with numeric keypad and a three line display, available in two models



Professional balance for weighing and counting. The memory positions and that it can be powered by rechargeable batteries, make this balance valuable. It is the ideal tool for accurate piece counting such as for inventory. To obtain a piece count, first the weight of a predetermined quantity is taken, or the value is input via the keypad. Then an undetermined quantity is placed on the balance and the weight, the reference weight and the quantity of pieces is shown. The counting balance has an RS-232 port for data transmission. Optional software allows the user to transfer data to a computer.

- Two models available
- Memory for 99 readings for reference weights
- Display separated by weight, quantity and reference weight
- Tara across entire weight range
- Preset tare can allow for input of a quantity or reference weight
- Powered by battery or rechargeable
- Powered by 230V mains adaptor
- ISO certification optional



### Technical specifications

Model	Weight range Max kg	Readability d g	Verification value e g	Minimum load Min g	Repeatability g	Linearity g	Piece count weight minimum g	Weighing plate mm
PCE-PCS 6	6	0.1	-	-	0.1	±0.2	0.1	230 x 310
PCE-PCS 30	30	0.5	-	-	0.5	±1	0.5	230 x 310
Tara range	full range							
Response time	2 sec.							
Units	g, kg							
Function	99 storage values preset tare weight and reference weight via keyboard							
Display	triple 6 digit LCD with backlight							
Interface	RS-232							
Calibration	automatic (with optional external calibration weights)							
Operating temperature	0 to +40 °C							
Power	230 v / 50 Hz (via 12 V adaptor) or rechargeable battery							
Enclosure	ABS plastic							
Weighing plate	stainless steel (removable)							
Protection	IP 54							
Dimensions	320 x 320 x 125 mm							
Weight	2.8 kg							

### Contents

PCE-PCS industrial balance (one of the models), weighing pan, internal rechargeable battery, mains adaptor and user's manual (For U.K. customers: incl. U.K. AC Mains Power Adaptor)

Model No.	Description
PCE-PCS 6	PCE-PCS 6 industrial balance
PCE-PCS 30	PCE-PCS 30 industrial balance

### Optional accessories

CAL-PCE-PCS	ISO certificate
PCE-SOFT-PCS	Software with RS-232 cable
RS232-USB	RS-232 to USB adaptor

# Industrial Balances

## Serie PCE-PB

### Industrial balance with RS-232 interface



We offer you a low cost parcel balance. This scale is ideal for shipping departments, e.g. with the PCE-PB 60 series weighing range of 0 to 60 kg you will be able to accurately weigh all the packages that you want to send with DHL, UPS or GLS. The 230 V mains adaptor is included in the delivery, although it can also be powered by Mignon type batteries, making the balance completely autonomous. Furthermore, this scale has an auto shut-off function after 3 minutes without changes in the load, allowing conservation of battery power. If you want, you can acquire an optional software kit to transfer data to a computer.

- 15 mm digital display
- Battery operation possible (6 1.5 V Mignon cells)
- Powered by mains adaptor (230 V 50 Hz / 12 V)
- RS-232 interface
- Wall mounting device
- Easy to use with only 4 keys
- Automatic shut-off after 3 minutes without a change in load (function can be disabled)
- Overload indicator to protect the balance from damage
- Display device, cable length approx. 1000 mm
- Rugged stainless steel weighing plate with non-skid sides
- Optional software kit (includes cable for PC connectivity)
- ISO certificate (optional)



#### Technical specifications

Model	Weighing range Max kg	Readability d g	Verification value e g	Minimum load Min g	Repeatability g	Linearity g	Piece count weight minimum g	Weighing plate mm
PCE-PB 60	60	20	-	-	20	±50	-	325 x 315
PCE-PB 150	150	50	-	-	50	±100	-	325 x 315
Tare range	full range							
Response time	2 sec.							
Units	kg, lb							
Functions	Data Hold							
Display	15 mm LCD/ backlight, 1m cable							
Interface	RS-232							
Calibration	automatic (with optional external calibration weights)							
Operating temperature	0 to +40 °C							
Power	230 V / 50 Hz (adapter) or 6 AA batteries of 1,5 V							
Enclosure	weighing plate: stainless steel, base: mild steel							
Ingress protection	IP 54							
Display dimensions	220 x 90 x 43 mm							
Weighing plate dimensions	325 x 315 x 55 mm							
Weight	4.5 kg							



#### Contents

PCE-PB parcel balance (one of our models), display with 1 m cable, wall mount for display, mains adaptor and user's manual  
(For U.K. customers: incl. U.K. AC Mains Power Adaptor)

Model No.	Description
PCE-PB 60	PCE-PB 60 Parcel balance
PCE-PB 150	PCE-PB 150 Parcel balance

#### Optional accessories

CAL-PCE-PB 60	ISO certificate for PCE-PB 60 parcel balance
CAL-PCE-PB 150	ISO certificate for PCE-PB 150 parcel balance
PCE-SOFT-PB	Software with RS-232 cable
PCE-BP1	Thermal printer with RS-232 data cable
RS232-USB	RS-232 to USB adaptor



PCE-BP1 printer  
(optional)



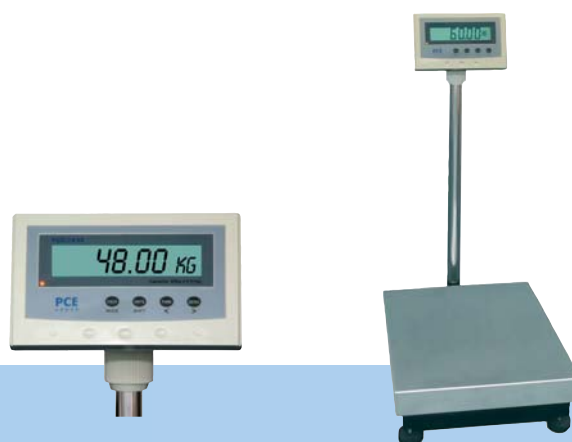
## Serie PCE-TS

Industrial balance with large display and RS-232 interface



This balance has a stainless steel platform, an RS-232 interface and a large display with backlight. Furthermore, it is delivered with a stand to elevate the display. The display is mounted at the back of the balance and if you want, you can remove it by removing its two mounting screws and mount it somewhere else. The display is connected to the balance by a 1.5 m cable and it can be placed on the stand for elevate the display up to 800 mm (according to an height that the user wants). This balance is powered by a 230 V mains adaptor which is included in the delivery, If you want, you can acquire an optional software kit which includes a USB cable.

- Powered by a rechargeable battery or mains adaptor
- Large 35 mm high display
- Automatic shut-off after 5 minutes to protect battery life
- Weighing with tolerance range (upper and lower limiting can be programmed)
- Alarm (audible beep in case of overload or low battery)
- Tare function across full weighing range
- Stand to elevate display up to 800 mm
- ISO certificate (optional)



### Technical specifications

Model	Weighing range Max kg	Readability d g	Verification value e g	Minimum load Min g	Repeatability g	Linearity g	Piece count weight minimum g	Weighing plate mm
PCE-TS 60	60	10	-	-	10	±20	-	560 x 460
PCE-TS 150	150	20	-	-	20	±40	-	560 x 460
Tare range	full range							
Response time	2 to 4 sec.							
Units	kg, lb							
Functions	Data Hold, weighing with tolerance range							
Display	35 mm LCD / backlight, 1.5m cable							
Interface	RS-232							
Calibration	automatic (with external optional calibration weights)							
Operating temperature	0 to +40 °C							
Power	230 V / 50 Hz (adaptor) and internal rechargeable battery							
Enclosure	weighing plate: stainless steel, base: mild steel							
Ingress protection	IP 54							
Display dimensions	260 x 155 x 70 mm							
Scale dimensions	560 x 460 x 75 mm							
Weight	16 kg							

### Contents

PCE-TS industrial balance (one of our models), display with 1.5 m cable and internal rechargeable battery, stand to elevate the display, protection for display, mains adaptor and user's manual (For U.K. customers: incl. U.K. AC Mains Power Adaptor)

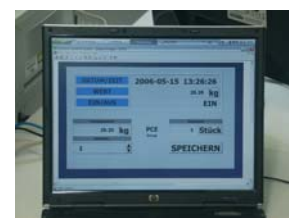
Model No.	Description
PCE-TS 60	PCE-TS 60 Industrial balance
PCE-TS 150	PCE-TS 150 Industrial balance

### Optional accessories

CAL-PCE-TS 60	ISO certificate for PCE-TS 60 industrial balance
CAL-PCE-TS 150	ISO certificate for PCE-TS 150 industrial balance
PCE-SOFT-TS	Software with RS-232 cable
PCE-BP1	Thermal printer with RS-232 data cable
RS232-USB	RS-232 to USB cable



PCE-BP1 printer (optional)



# Industrial Balances

## Serie PCE-PM

Industrial balances with verification, three models availables (up to 300 kg)



The PCE-PM platform balance is a verifiable industrial balance with a rugged, stainless steel base and platform. The built-in display can be mounted on a wall or on the stand which is included. This series of balances are verified and can be used as a commercial scale. The verification is carried out by a calibration authority according to the M class III legal for trade standard. We also offer an optional ISO certificate. This calibration certificate gives you the possibility to save data according to a national pattern.

- Adjustment programme to quick set the accuracy of the balance (using external weight)
- Piece counting with variable reference: 5, 10, 20, 50, 100 or 200 pieces
- Stability indicator
- Can be integrated and connected to DHL, UPS or GLS shipping systems
- Large LED
- RS-232 interface for data transfer
- Bubble level to adjust the balance
- Tare function across full weighing range
- Rugged stainless steel weighing plate
- Stand to elevate display up to 730 mm
- Optional M class III Legal for trade verification
- ISO certificate (optional)



### Technical specifications

Model	Weighing range Max kg	Readability d g	Verification value e g	Minimum load Min g	Repeatability g	Linearity g	Piece count weight minimum g	Weighing plate mm
PCE-PM 30	30	10	10	200	10	±10	5	400 x 490
PCE-PM 62	60	20	20	400	20	±20	10	400 x 400
PCE-PM 150	150	50	50	1000	50	±50	25	600 x 490
PCE-PM 300	300	100	100	2000	100	±100	50	600 x 490
Tare range	full range							
Response time	<3 sec.							
Units	kg							
Functions	piece counting function							
Display	20 mm LED							
Interface	RS-232							
Calibration	automatic (with optional external calibration weight)							
Operating temperature	-10 to +40 °C							
Power	230 V / 50 Hz (via adaptor)							
Enclosure	stainless steel weighing plate, plastic display							
Ingress protection	IP 54							
Display dimensions	280 x 190 x 96 mm, stand height: 730 mm							
Weighing plate dimensions	PCE-PM 30: 400 x 490 x 130 mm,							
	PCE-PM 62: 400 x 400 x 100 mm,							
	PCE-PM 150 & PCE-PM 300: 600 x 490 x 145 mm							
Weight	PCE-PM 30 & PCE-PM 62: 12 kg; PCE-PM 150 & PCE-PM 300: 24 kg							

### Contents

PCE-PM industrial balance (one of our models), display, stand to mount display, mains adaptor and user's manual (For U.K. customers: incl. U.K. AC Mains Power Adaptor)

Model No.	Description
PCE-PM 30	PCE-PM 30 Industrial balance
PCE-PM 62	PCE-PM 62 Industrial balance
PCE-PM 150	PCE-PM 150 Industrial balance
PCE-PM 300	PCE-PM 300 Industrial balance

### Optional accessories

VER-PCE-PM	M class III Legal for trade verification
CAL-PCE-PM	ISO certificate
PCE-SOFT-PM	Software with RS-232 cable
PCE-PM-RS232	RS-232 cable (for connectivity to DHL, UPS or GLS shipping systems)
RS232-USB	RS-232 to USB adaptor
PCE-BP1	Thermal printer with RS-232 data cable



PCE-BP1 printer  
(optional)



## PCE-PS 75XL

### Balance with large weighing platform



Portable and very economical platform balance for everyday use. Simply move it into place and weigh an object, it couldn't be easier. Its flat design, light weight and the ability to power the balance with batteries or by an mains connection, make this balance very flexible. It can also be transported and placed in different locations. It has a good relation between price and quality.

- Extractable display with 2m cable
- RS-232 interface
- Powered by rechargeable battery or mains adaptor
- Tare across entire range
- Quick response time (3 seconds)
- Adjustable feet
- Stainless steel weighing platform
- Laquered steel base
- ISO certification available separately



### Technical specifications

Model	Weighing range Max kg	Readability d g	Verification value e g	Min. load Min g	Repeat. g	Linearity g
PCE-PS 75XL	75	20	-	-	20	±50
Tare range			full range			
Response time			3 sec.			
Units			kg and lb			
Functions			Data Hold, overload protection indicator			
Display			25 mm LCD, backlight, 2 m cable			
Interface			RS-232			
Calibration			automatic (with optional external calibration weight)			
Operating temperature			0 to +40 °C			
Power			230 V / 50 Hz (mains adaptor) or rechargeable batteries			
Enclosure			stainless steel weighing plate, mild steel base			
Ingress protection			IP 54			
Display dimensions			225 x 95 x 55 mm			
Weighing plate dimensions			900 x 600 x 90 mm			
Weight			17 kg			

### Contents

PCE-PS 75XL platform balance, display with rechargeable battery and 2 m cable, mains adaptor and user's manual (For U.K. customers: incl. U.K. AC Mains Power Adaptor)

Model No.	Description
PCE-PS 75XL	PCE-PS 75XL Industrial balance

### Optional accessories

CAL-PCE-PS	Calibration certificate
PCE-SOFT-PS	Software with RS-232 cable
RS232-USB	RS-232 to USB adaptor



# Industrial Balances

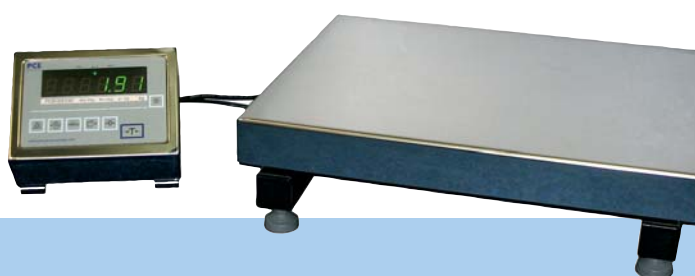
## Serie PCE-PM SST

Stainless steel scale for use in unfavourable environments and for hygienic use



This is an impermeable industrial balance with verification and made of stainless steel with separate display. The scale has ingress protection IP 67, so is resistant to dust and can be temporarily submerged to a depth of 1 meter. It can be cleaned with jets of water. This scale is ideal for whichever application in humid conditions and for the food industry, thanks to its smooth surfaces and rounded edges. The scale is powered by mains of 230 V. Also, this impermeable scale has an RS-232 interface that is protected to allow use in humid conditions. Together with the optional software, data can be transmitted to a computer. The scale can be calibrated according to ISO standards or verified according to commercial class M III. If you wish, you can request an ISO calibration or an official verification with your order at additional cost. You can also send the balance to a laboratory that is accredited to do calibrations or to the official verification body in your community.

- Steel platform with protected cell resistant to dust and water according to IP 67
- Resistant to dust and water according to IP 65
- Programme to adjust the accuracy by way of adjustment weight
- Piece calculation function with references of 5, 10, 20, 50, 100 or 200 pieces
- Stability indicator
- Large LED with high illumination
- RS-232 interface for data transmission
- Level to accurately adjust the balance
- External calibration (note: this is only possible with scales that are not verified)
- Verifiable according to commercial class M III
- Optional ISO certificate



### Technical specifications

Model	Weighing range Max	Readability d	Verification value e	Minimum load Min	Repeatability g	Linearity g	Piece count weight minimum g	Weighing plate mm
PCE-PM 30SST	30	10	10	200	10	±10	5	400 x 490
PCE-PM 60SST	60	20	20	400	20	±20	10	400 x 490
Tare range	full range							
Response time	<3 s							
Units	kg							
Functions	piece counting							
Indicator	20 mm LED							
Interface	RS-232							
Calibration	automatic (with optional external calibration weight)							
Operating temperature	-10 to +40 °C							
Power	230 V / 50 Hz (via net adaptor)							
Enclosure	stainless steel							
Ingress protection	platform: IP 67, indicator: IP 65							
Dimensions indicator	200 x 150 x 80 mm							
Dimensions platform	400 x 490 x 130 mm							
Weight	approx. 23 kg							

### Contents

Stainless steel balance PCE-PM SST (one of our models), indicator, mains adaptor and user's manual (For U.K. customers: incl. U.K. AC Mains Power Adaptor)

Model No.	Description
PCE-PM 30SST	Stainless steel balance PCE-PM 30SST
PCE-PM 60SST	Stainless steel balance PCE-PM 60SST

### Optional accessories

VER-PCE-PM	M class III Legal for trade verification
CAL-PCE-PM	ISO certificate
PCE-SOFT-PM	Software with RS-232 cable
RS232-USB	RS-232 to USB adaptor



Perfect for industry- and food applications.



## PCE-HS 150

Hanging scale up to 150 kg



The hanging scale is especially suitable for rough use in different industries, as well as for a wide variety of other applications. The scale has an internal mechanism to ensure that the received and indicated value is identical to the transmitted value. The lightweight hanging scale is powered by batteries, what ensures a continuous work period of 150 h before it has to be changed batteries again.

- Powered by batteries
- Very easy to use
- High accuracy through strain band
- Tare across full range
- Data Hold function (value adjustment)
- ISO certificate (optional)



### Technical specifications

Weighing range	0 to 150 kg
Readability	100 g
Probe link	S-hook
Hook	stainless steel
Display	3 digit LCD
Power	2 x CR2032 battery
Enclosure	ABS plastic
Dimensions	365 x 335 x 180 mm
Weight	400 g

### Contents

PCE-HS 150 hanging scale, batteries and user's manual

Model no.	Description
PCE-HS 150	Hanging scale

### Optional accessories

CAL-PCE-HS 150 ISO certificate



## PCE-AFG Serie

Analogue load crane with ranges of 30 and 120 kN and a large display



The PCE-AFG series are analogue load crane for measuring traction in Newton. There are two shackles included with the device. This durable model can be used in adverse industrial conditions. These load cranes come calibrated from the manufacturer. If an ISO calibration certificate is required for a load crane, one can be ordered separately.

- Analogue, no power supply required
- Easy to use
- Light weight for easy transport
- Drag needle to maintain the maximum weight
- Resistant to impacts
- Comes with two shackles (above and below)
- Type of protection: IP 54
- Maximum overload allowed is 200%, K = 2
- ISO certificate (optional)



### Technical specifications

Model	PCE-AFG 30	PCE-AFG 120
Weighing range	0 ... 30 kN	0 ... 120 kN
Accuracy	class 2	class 2
Readability	0,5 kN	2 kN
Minimum load	0,5 kN	2 kN
Units	Newton	Newton
Tara	full range	
Overload protection	up to 200% above nominal maximum	
Display	analogue dial with drag needle	
Ingress protection	IP 54	
Power	---	

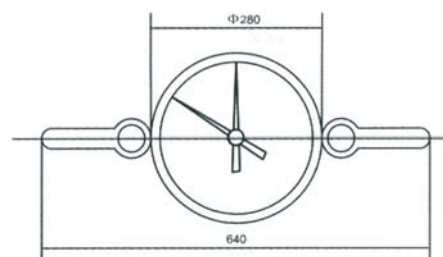
### Contents

PCE-AFG hanging scale (various models), 2 x shackle, case and user's manual

Model No.	Description
PCE-AFG 30	Hanging scale up to 30 kN
PCE-AFG 120	Hanging scale up to 120 kN

### Optional accessories

CAL-PCE-AFG ISO certificate



# Industrial Balances

## Serie PCE-CS

Low cost crane scale for indoor applications



We offer you a portable and compact crane scale that is powered by an internal rechargeable battery. It has tare function and accumulator function for high accuracy. This scale includes a hook, hanging loop, rechargeable battery, loader and a remote control with batteries. Its rugged design makes it ideal for daily use in the industrial sector and in the trade, transport or food sectors. This crane scale is delivered factory calibrated. You can purchase a laboratory calibration with an ISO certificate (at additional cost) to meet DIN ISO 9000 standard.

- 30 mm LED with
- Infrared remote control: all functions are selectable
- Powered by an internal rechargeable battery (battery charger is included in the delivery)
- Data Hold function, the weight display can be "frozen" using the HOLD key
- Stainless steel hanging loop, zinc hook
- Overload protection 400 %, (K= 4)
- Special "sum up" function
- ISO certificate (optional)



### Technical specifications

Model	Weighing range Max kg	Readability d g	Minimum load Min kg	Repeatability kg	L mm	A mm	B mm	C mm	Weight kg
PCE-CS 300	300	50	2.0	0.1	335	20	65	20	4.0
PCE-CS 1000	1000	200	10.0	0.5	360	25	75	20	4.2
Tare range	full range								
Response time	<10 sec.								
Units	kg								
Display	30 mm LED								
Maximum overload	400 %								
Calibration	automatic (with optional external calibration weight)								
Operating temperature	0 to +40 °C								
Power	internal rechargeable battery for 50 hours operating time (230 V / 50 Hz battery charger included in the delivery)								
Remote control	usable for all functions (included)								
Ingress protection	IP 54								

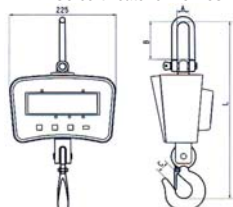
### Contents

PCE-CS crane scale (one of our models), internal rechargeable battery, charger, infrared remote control (batteries included), shackle, hook and user's manual (For U.K. customers: incl. U.K. AC Mains Power Adaptor)

Model No.	Description
PCE-CS 300	PCE-CS 300 Crane scale
PCE-CS 1000	PCE-CS 1000 Crane scale

### Optional accessories

CAL-0.5T	ISO certificate for PCE-CS 300 crane scale
CAL-1T	ISO certificate for PCE-CS 1000 crane scale



## Serie PCE-CS HD

Rugged crane scale for indoor applications



We offer you a rugged crane scale for indoor use that is powered by an internal rechargeable battery. It has a tare function for high accuracy. The scale includes a hook and remote control. Its rugged enclosure makes it ideal for daily use in the industrial sector and in the trade, transport or food sectors. You can purchase a laboratory calibration with an ISO certificate, at additional cost, to meet with the DIN ISO 9000 standard. In conclusion, it is a low cost instrument for industrial and commercial applications.

- 30 mm LED with backlight
- Infrared remote control: all functions are selectable
- Powered by internal rechargeable battery (battery charger included in the delivery)
- Data Hold function, the weight display can be "frozen" using the HOLD key
- Stainless steel hanging loop, zinc hook
- Overload protection 400 %, (K=4)
- Special "sum up" function
- ISO certificate (optional)



### Technical specifications

Model	Weighing range Max kg	Readability d kg	Minimum load Min kg	Repeatability kg	A mm	B mm	C mm	Weight kg
PCE-CS 3000 HD	3000	0.5	20	1	600	80	45	14
PCE-CS 5000 HD	5000	1	40	2	730	100	55	24
PCE-CS 10000 HD	10000	2	100	5	850	120	70	44
Tare range	full range							
Response time	<10 sec.							
Units	kg							
Indicator	30 mm LED							
Maximum overload	400 %							
Calibration	automatic (with optional external calibration weight)							
Operating temperature	0 to +40 °C							
Power	internal rechargeable battery for 80 hours operating time (230 V / 50 Hz battery charger included in the delivery)							
Enclosure	metal							
Remote control	usable for all functions (included)							
Ingress protection	IP 54							

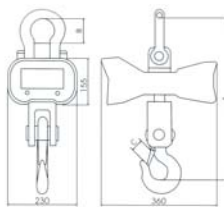
### Contents

PCE-CS HD crane scale (one of our models), internal rechargeable battery, charger, remote control (batteries included), shackle, hook and user's manual (For U.K. customers: incl. U.K. AC Mains Power Adaptor)

Model No.	Description
PCE-CS 3000 HD	PCE-CS 3000 HD Crane scale
PCE-CS 5000 HD	PCE-CS 5000 HD Crane scale
PCE-CS 10000 HD	PCE-CS 10000 HD Crane scale

### Optional accessories

CAL-10T	ISO certificate for crane scale
---------	---------------------------------



## Serie PCE-SW

### Low cost pallet scale



This PCE-SW 1500 / PCE-SW 3000 pallet scale is low cost, accurate and very easy to use. It can be used in any place thanks to its two wheels. The display is connected to the balance by a 4 m cable. This balance is powered by arechargeable battery or a 230 V mains adaptor which is included in the delivery. If you want, you can acquire an optional software kit which includes a USB cable.

- Repeatability  $\pm 0.5$  kg
- Large 25 mm LCD
- Automatic calculation of the tare and manual tare input
- U shaped scale for easy access
- Powered by a rechargeable battery or mains adaptor
- RS-232 interface for data transmission
- Wheels and handle for a easy transport
- Adjustable levelling feet to set the balance
- Auto shut-off to protect battery life
- ISO certificate (optional)



#### Technical specifications

Model	Weighing range Max kg	Readability d kg	Repeatability kg
PCE-SW 1500	1500	0.5	0.5
PCE-SW 3000	3000	1.0	1.0
Tare range	full range		
Response time	3 to 5 s		
Units	kg		
Indicator	25 mm LCD with backlight		
Maximal overload	125 %		
Calibration	automatic (with optional external calibration weight)		
Operating temperature	-10 to +40 °C		
Interface	RS-232		
Power	rechargeable battery or mains adaptor 230 Hz / 50 Hz		
Enclosure	coated steel		
Ingress protection	IP 54		
Dimensions	(2x) 1260 x 120 x 95 mm		
Weight	50 kg		

#### Contents

PCE-SW 1500 / PCE-SW 3000 pallet scale, indicator with rechargeable battery, mains adaptor and user's manual (For U.K. customers: incl. U.K. AC Mains Power Adaptor)

Model No.	Description
PCE-SW 1500	PCE-SW 1500 pallet scale
PCE-SW 3000	PCE-SW 3000 pallet scale

#### Optional accessories

CAL-PCE-SW	ISO certificate
PCE-SOFT-SW	Software with RS-232 cable
RS232-USB	RS-232 to USB adaptor
PCE-BP1	Thermal printer with RS-232 data cable



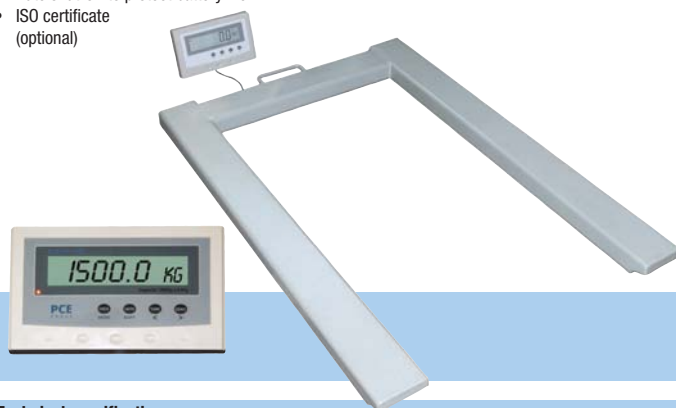
## PCE-EP 1500

### Low cost pallet scale



This PCE-EP 1500 pallet scale is low cost, accurate and very easy to use. It can be used in any place thanks to its two wheels. The display is connected to the balance by a 3 m cable. This balance is powered by arechargeable battery or a 230 V mains adaptor which is included in the delivery. If you want, you can acquire an optional software kit which includes a USB cable.

- Repeatability  $\pm 0.5$  kg
- Large 25 mm LCD
- Automatic calculation of the tare and manual tare input
- U shaped scale for easy access
- Powered by a rechargeable battery or mains adaptor
- RS-232 interface for data transmission
- Wheels and handle for a easy transport
- Adjustable levelling feet to set the balance
- Auto shut-off to protect battery life
- ISO certificate (optional)



#### Technical specifications

Model	Weighing range Max kg	Readability d kg	Repeatability kg
PCE-EP 1500	1500	0.5	0.5
Tare range	full range		
Response time	3 to 5 s		
Units	kg		
Indicator	25 mm LCD with backlight		
Maximal overload	125 %		
Calibration	automatic (with optional external calibration weight)		
Operating temperature	0 to +40 °C		
Power	- rechargeable battery - mains adaptor 230 Hz / 50 Hz		
Enclosure	coated steel		
Accessories	wheels and handle, levelling feet		
Ingress protection	IP 54		
Dimensions	1260 x 840 x 95 mm		
Weight	50 kg		

#### Contents

PCE-EP 1500 pallet scale, indicator with rechargeable battery, mains adaptor and user's manual (For U.K. customers: incl. U.K. AC Mains Power Adaptor)

Model No.	Description
PCE-EP 1500	PCE-EP 1500 pallet scale

#### Optional accessories

CAL-PCE-EP	ISO certificate
PCE-SOFT-EP	Software with RS-232 cable
RS232-USB	RS-232 to USB adaptor





## ISO Certificate

Certificate according to DIN ISO

Companies that have a management system according to the ISO 9000 are required to calibrate their measuring instruments regularly. Because of this, we offer you this optional ISO certificate. We will send, on your behalf, the measuring instrument to an accredited laboratory, where they are checked and calibrated. The certificate includes the values with deviations, the serial number of the device and the client name. In this way your device and the results are based on the international patterns.



## Verification

### Class M I, M II and M III Verifications

According to UE 90/384/EWG guidelines all the scales must be verified for:

- Commercial relationships where the price of good is determined by its weight, e.g. foods like cold meat, meat or cheese, as well as gold or precious stones.
- Medicine production and analysis in medical and pharmaceutical laboratories.
- Rates, tariff and official fines determination.
- Industrial packing production.



If you want, we can carry out the verification for you. We can send the scale to the corresponding accredited organisation. They will check the scale and include a verification mark and a conforming document. The first verification has a period of availability of 2 years. The scale is sealed so that it cannot be manipulated or calibrated by anybody.

This verification has validity across the entire European Union.

## Software

Software for data transfer

We offer you software for data transfer for almost all our instruments and scales with USB cable. With the help of the software you will be able to transmit the measurement values / load data to your computer. You can acquire an adaptor for your computer if they only have a USB interface.

- For Windows NT, 2000, XP
- It includes RS-232 cable (d-sub, of 9 pins)
- You can store the measurement data
- You can transfer the data to Excel
- Possibility to generate all types of reports
- Optional RS-232 to USB adaptor



## Customer support services

Technical support carried out by our engineers

We provide you with high quality services to support our products (measuring instruments and balances) for all your applications. We can help you purchase the most appropriate device according to your needs. Don't hesitate to contact our specialists from Monday to Friday.

